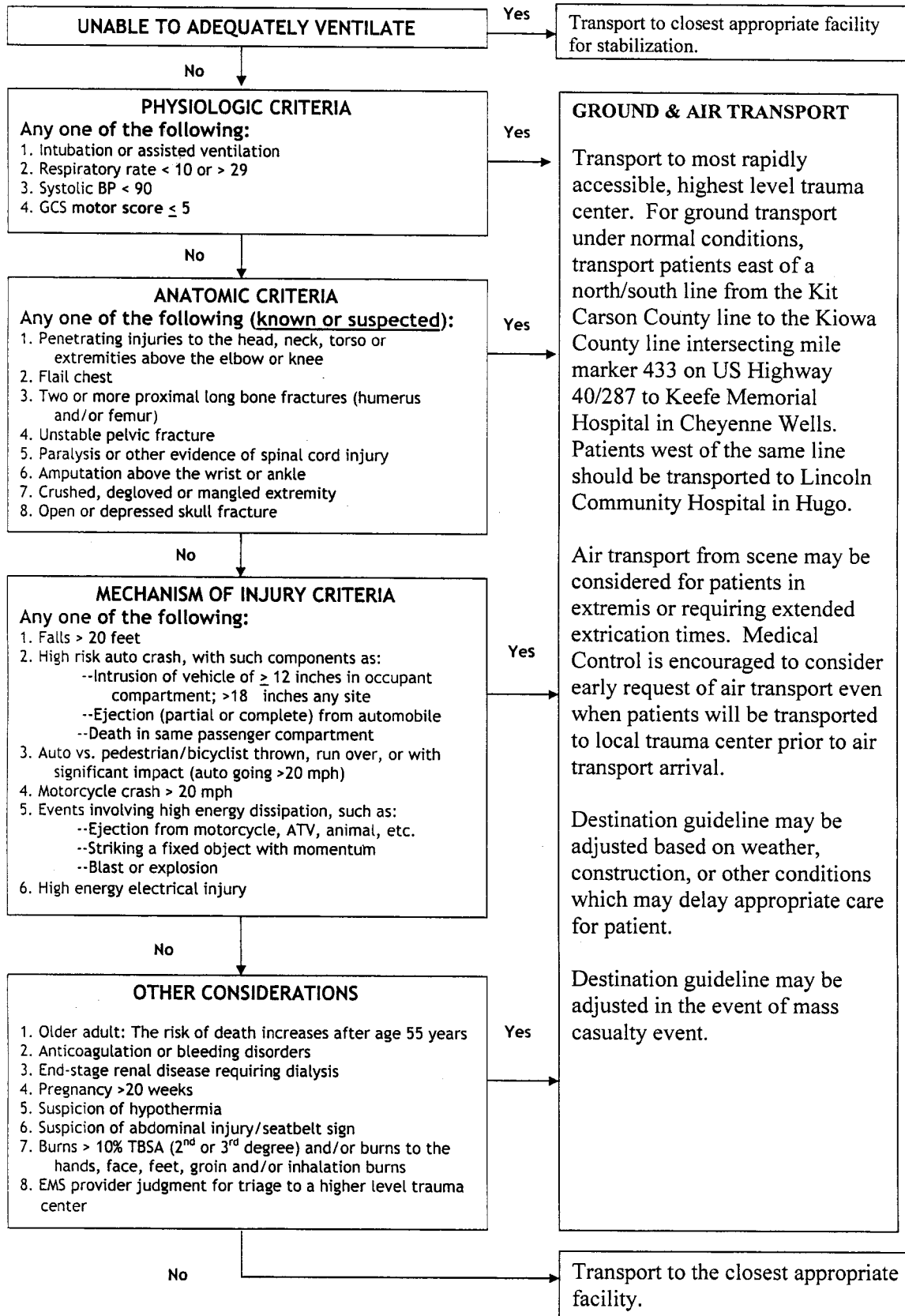


**Pre-hospital Trauma Triage Algorithm Guideline, October 2011
Adult Patients (Ages 15 and older)**

CHEYENNE COUNTY

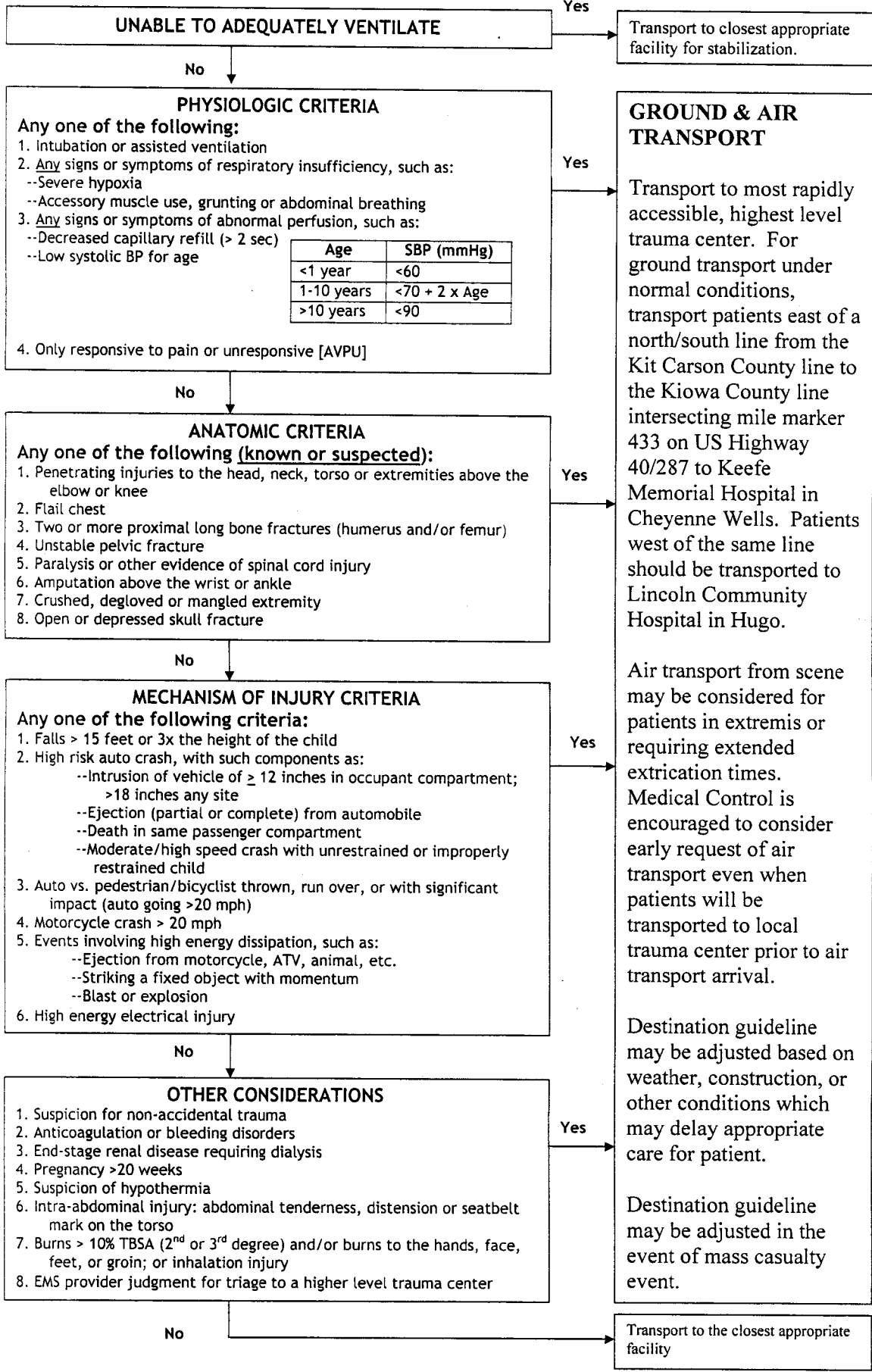


Note: This algorithm may be modified in multiple casualty events.

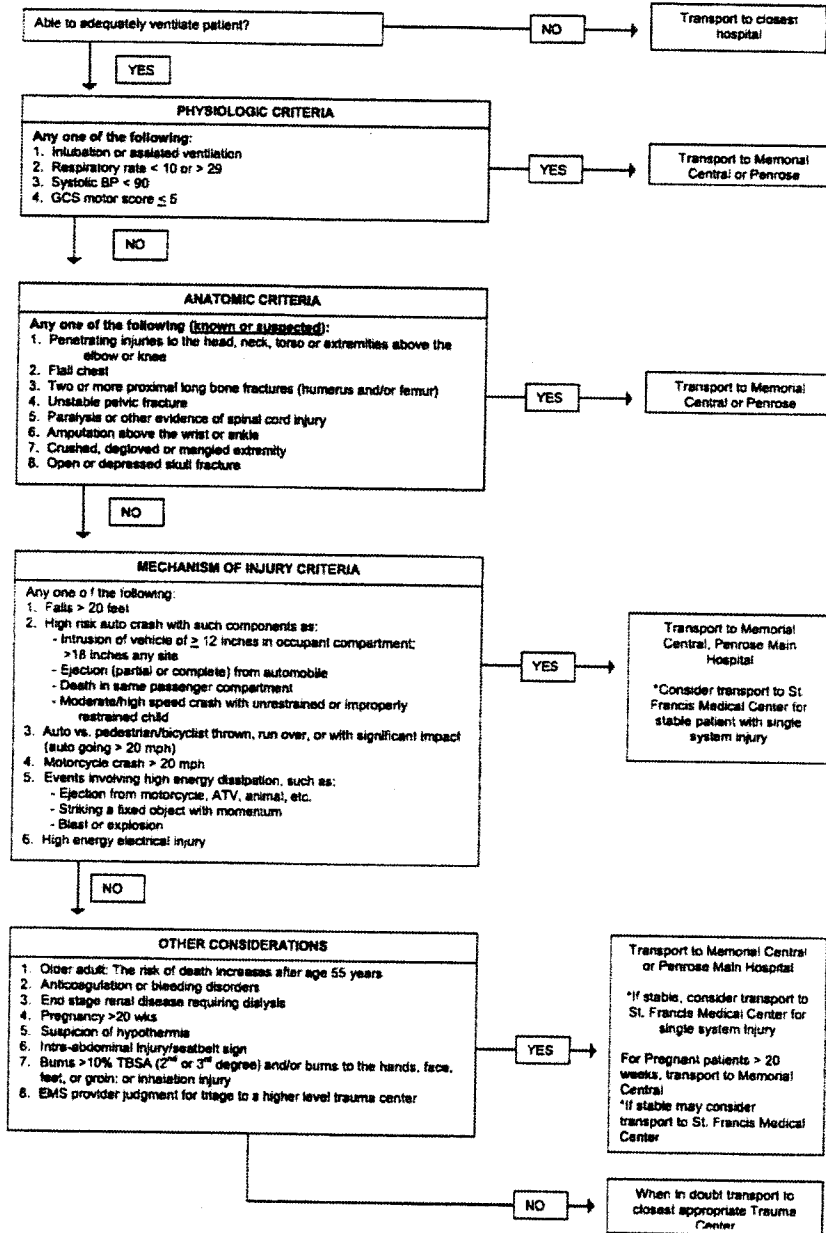


**Pre-hospital Trauma Triage Algorithm Guideline, October 2011
Pediatric Patients (Less than 15 years old)**

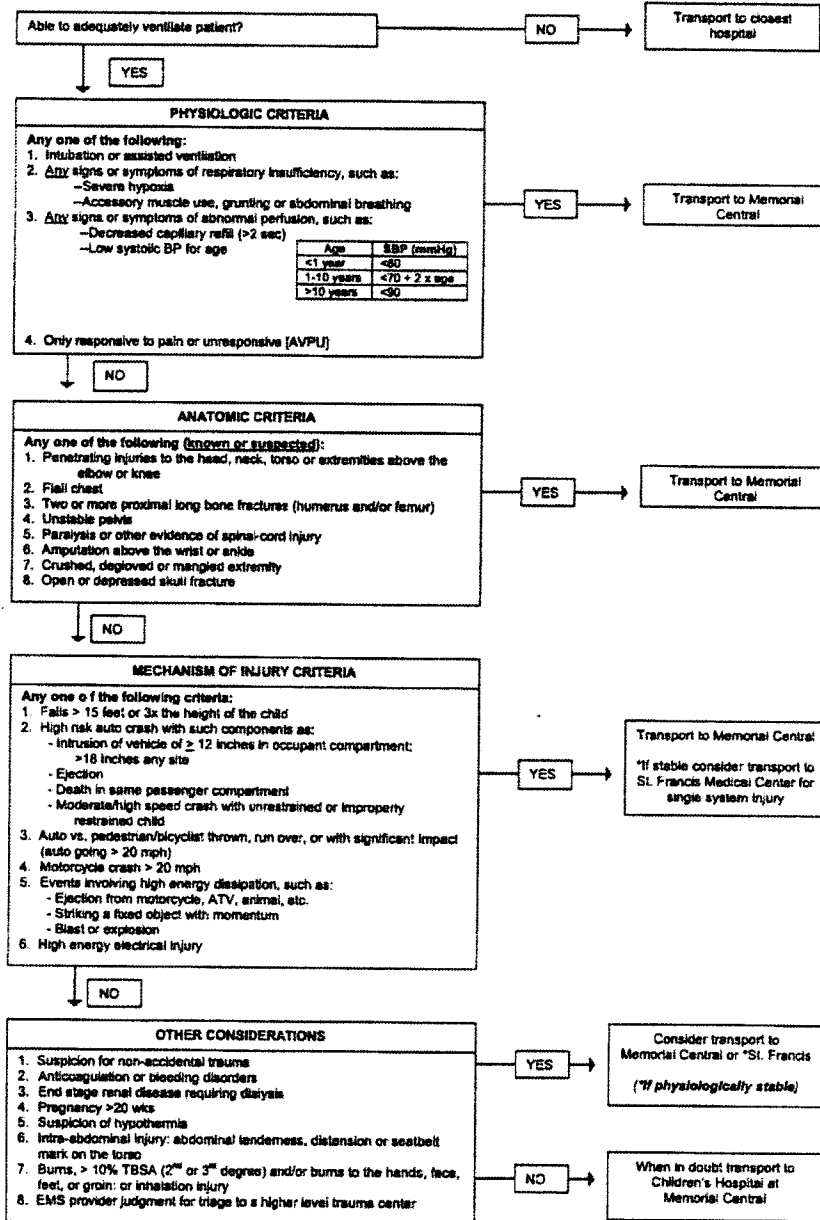
CHEYENNE COUNTY



EL PASO COUNTY TRAUMA TRIAGE DECISION SCHEME
Adult Patients (Ages 15 and older)

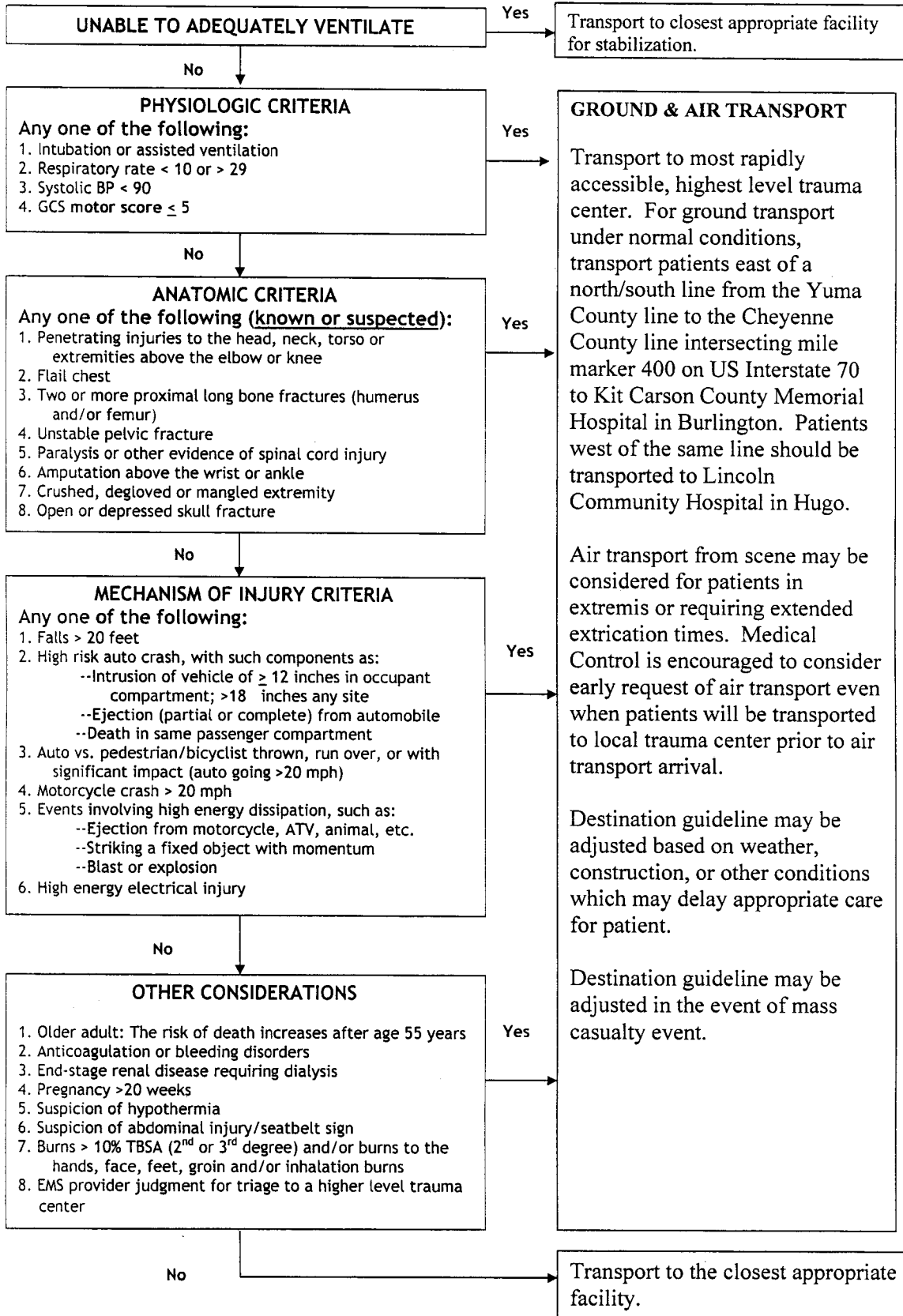


EL PASO COUNTY TRAUMA TRIAGE DECISION SCHEME
Pediatric Patients (less than 15 years old)



**Pre-hospital Trauma Triage Algorithm Guideline, October 2011
Adult Patients (Ages 15 and older)**

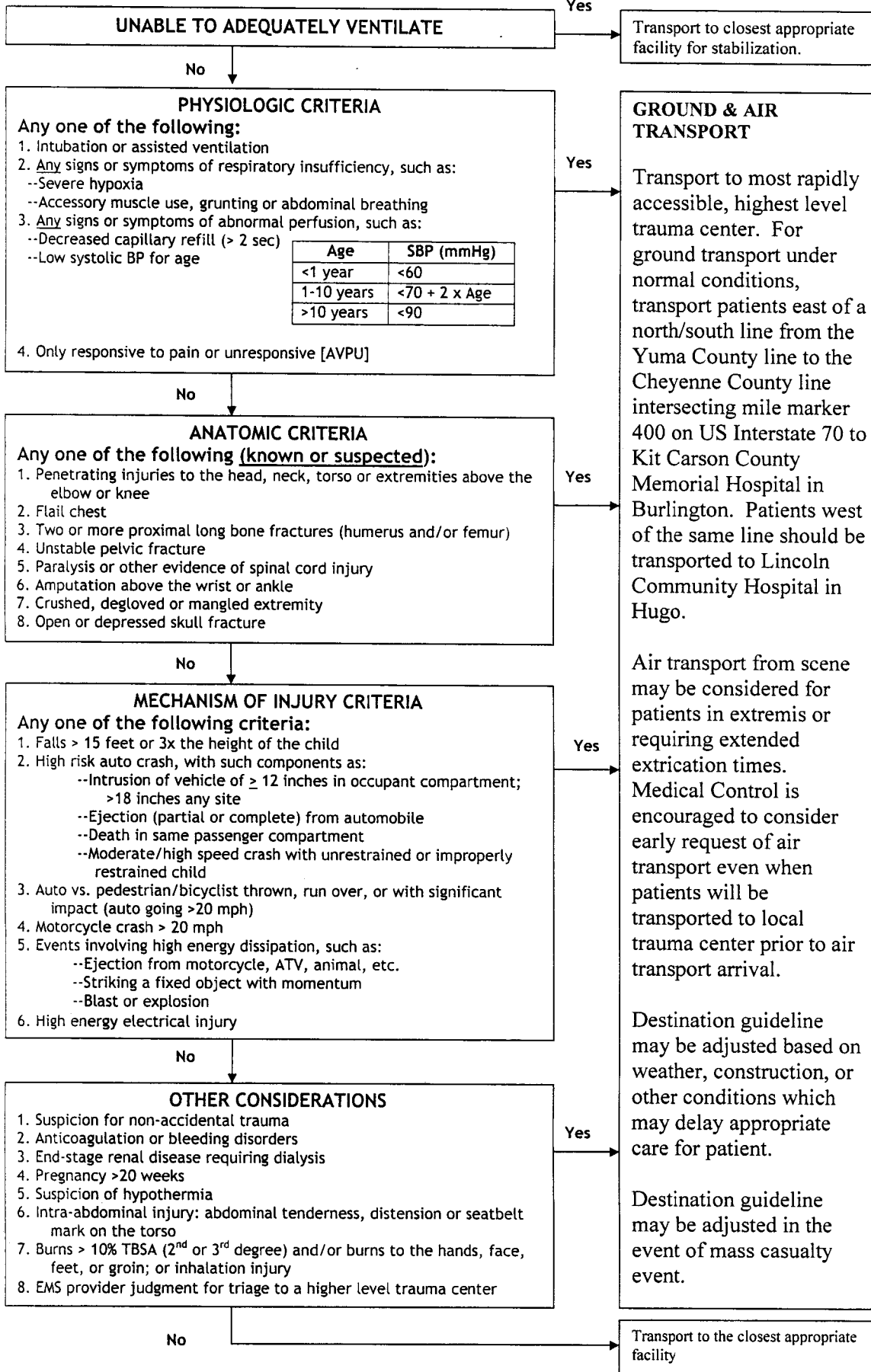
KIT CARSON COUNTY



Note: This algorithm may be modified in multiple casualty events.

**Pre-hospital Trauma Triage Algorithm Guideline, October 2011
Pediatric Patients (Less than 15 years old)**

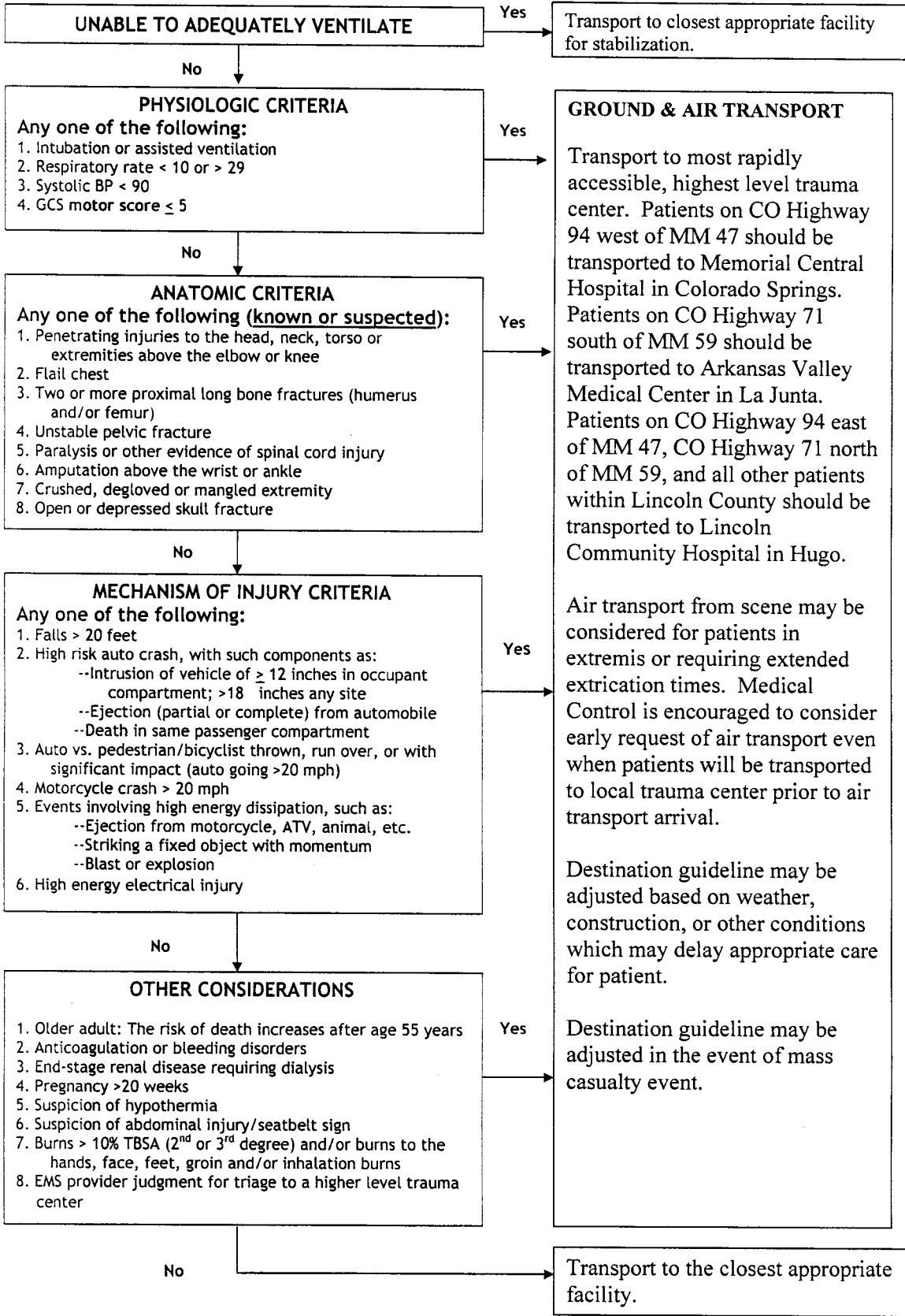
KIT CARSON COUNTY





**Pre-hospital Trauma Triage Algorithm Guideline, October 2011
Adult Patients (Ages 15 and older)**

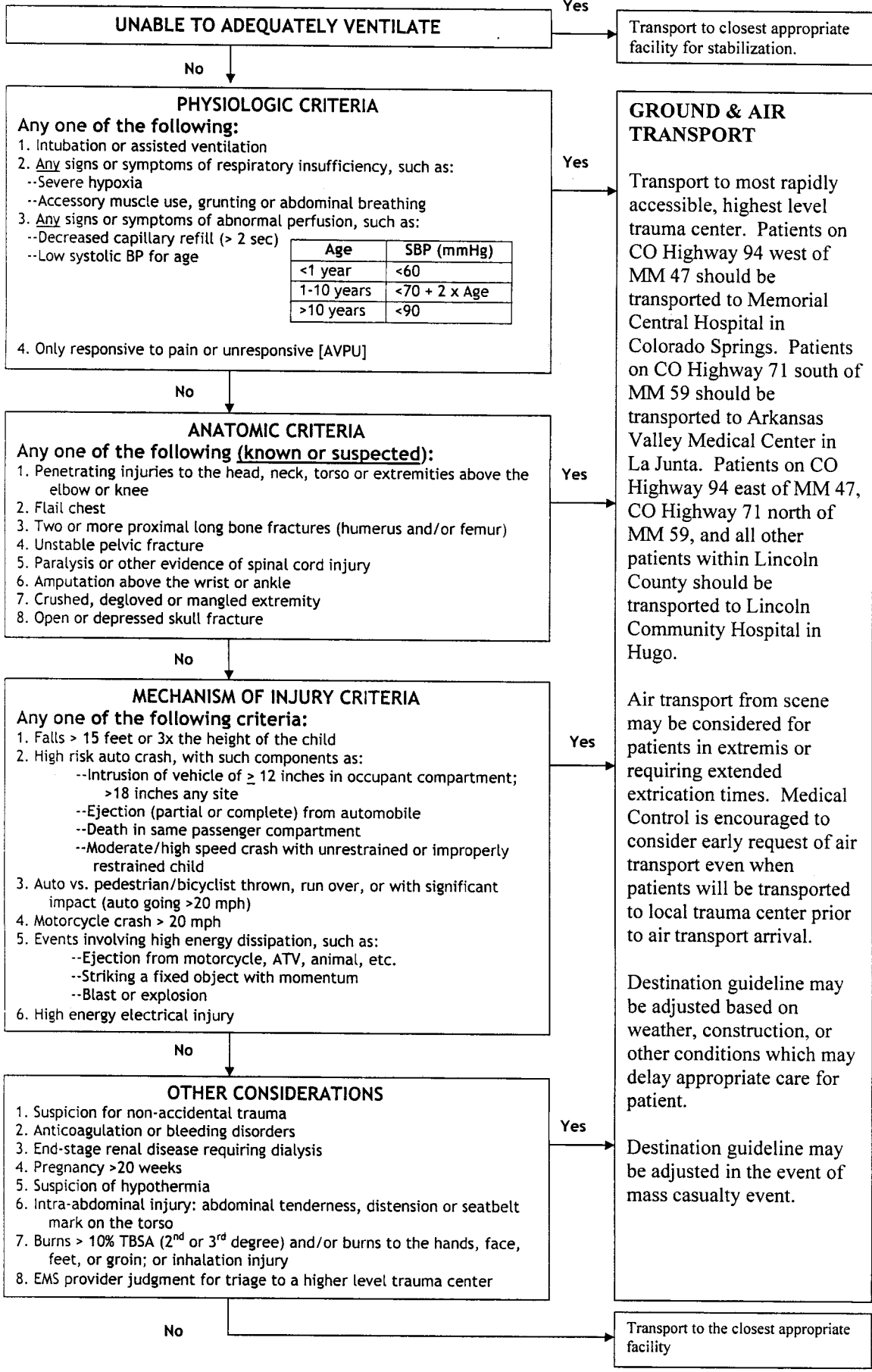
LINCOLN COUNTY



Note: This algorithm may be modified in multiple casualty events.

**Pre-hospital Trauma Triage Algorithm Guideline, October 2011
Pediatric Patients (Less than 15 years old)**

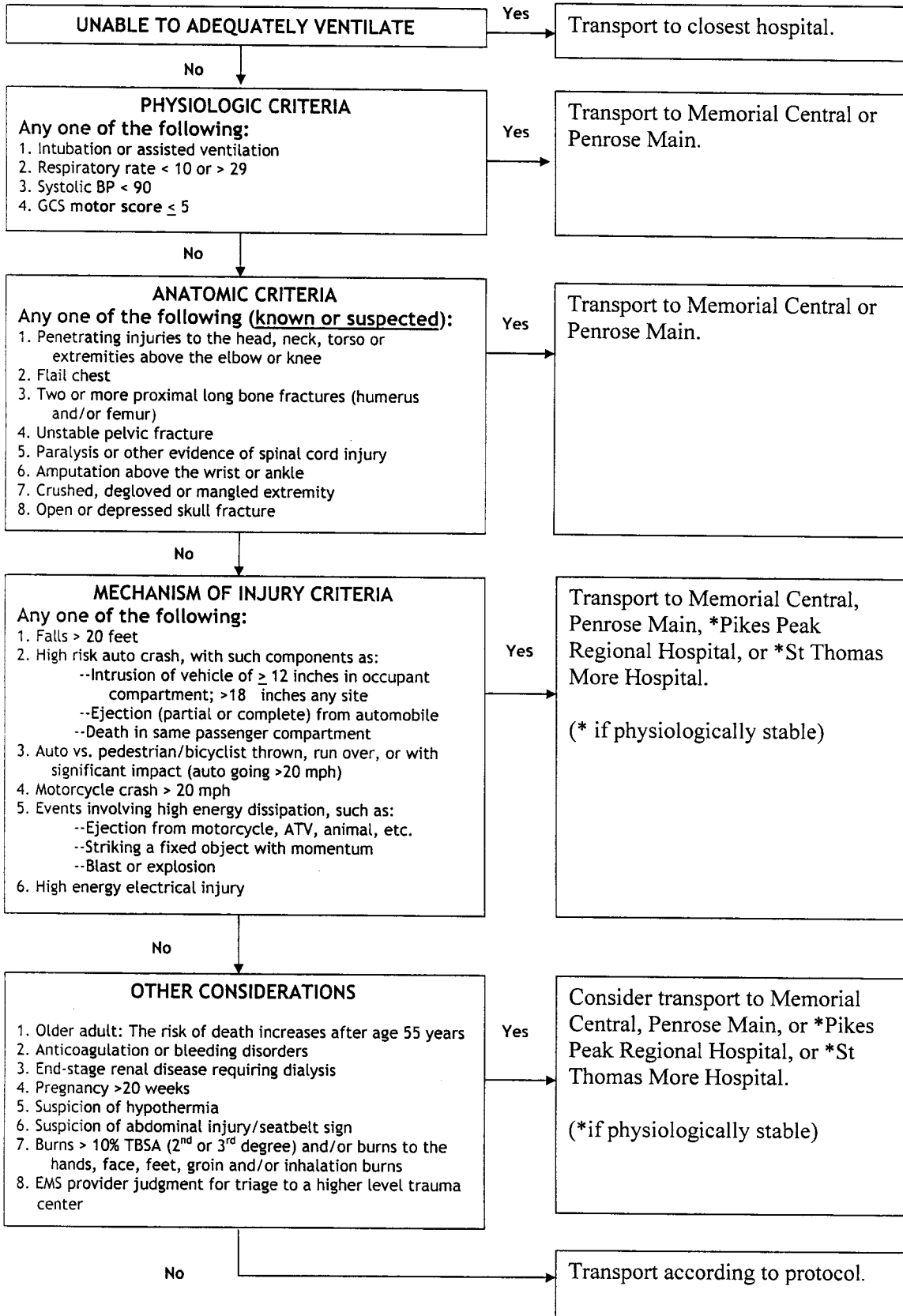
LINCOLN COUNTY





**Pre-hospital Trauma Triage Algorithm Guideline, October 2011
Adult Patients (Ages 15 and older)**

TELLER COUNTY



Note: This algorithm may be modified in multiple casualty events.



Pre-hospital Trauma Triage Algorithm Guideline, October 2011
Pediatric Patients (Less than 15 years old)

TELLER COUNTY

